



# FISHERIES NOTICE 2023-01

Issued May 15, 2023



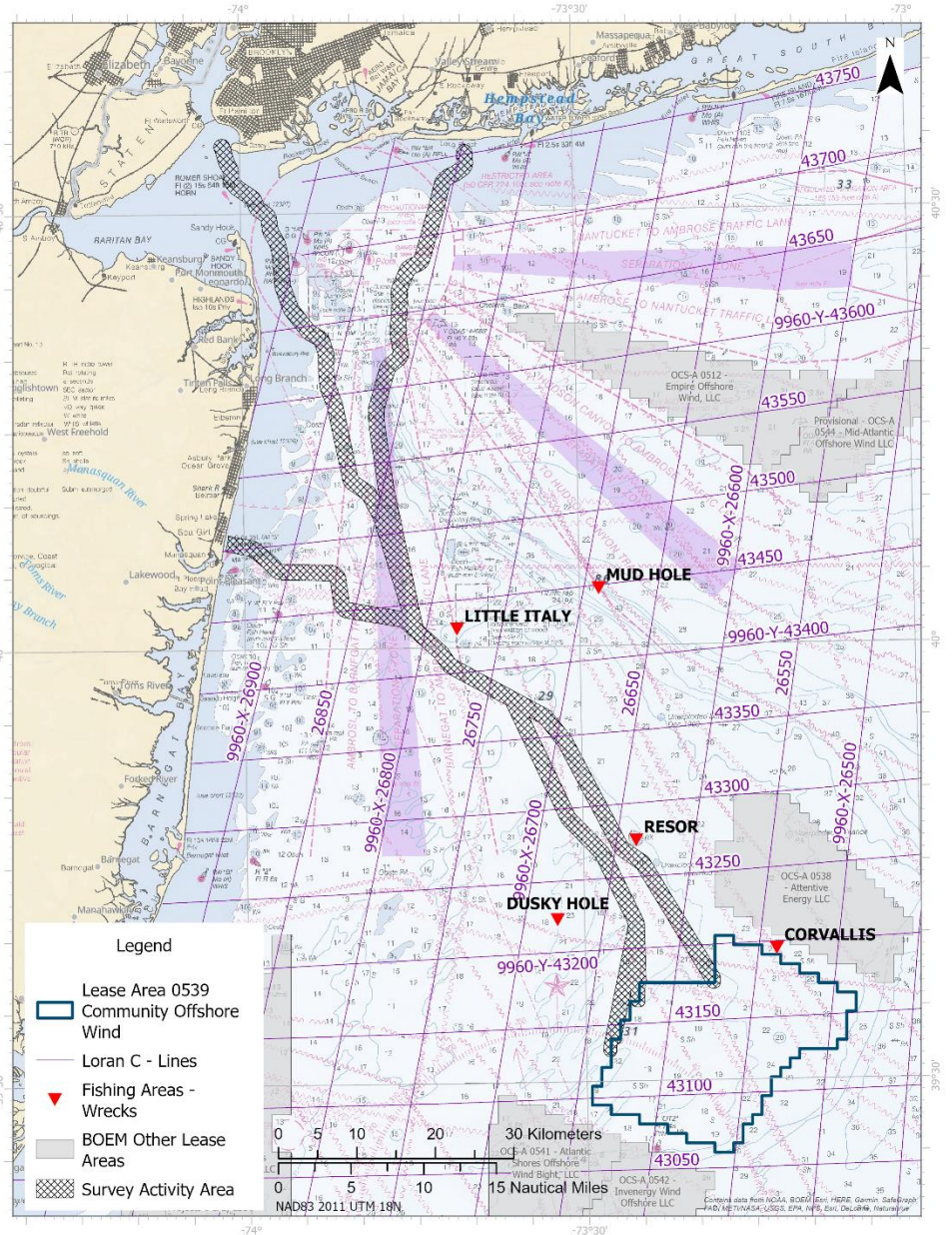
SCAN ME

## POTENTIAL EXPORT CABLE CORRIDORS – GEOPHYSICAL SURVEYS

Community Offshore Wind will begin High Resolution Geophysical surveys of potential offshore export cable corridors on or after May 30, 2023. Reconnaissance of potential export cable corridors will include multibeam bathymetry, side scan sonar imaging, magnetic measurements, and shallow sub-bottom profiling. This initial survey of potential export cable corridors is expected to last through August 31, 2023. Survey corridors are 1400 meters (0.75 nautical miles) wide to accommodate vessel turns while towing survey equipment. Information from these activities will be used to characterize the seabed, refine knowledge of bottom features or obstructions, and inform future export cable route development.

High Resolution Geophysical survey activities continue within the lease area (OCS-A Lease 0539; see [Fisheries Notice 2022-01](#)). Benthic and geotechnical survey campaigns are expected to begin later this summer and will be

coordinated with ongoing and future geophysical surveys. Community Offshore Wind will provide fisheries notices and updates prior to the start of additional survey activities.



### CONTACTS

Deirdre Boelke, Fisheries Liaison  
Cell: 978.518.0638

[DeirdreB@communityoffshorewind.com](mailto:DeirdreB@communityoffshorewind.com)

Michelle Duval, Fisheries Liaison  
Cell: 919.601.3798

[MichelleD@communityoffshorewind.com](mailto:MichelleD@communityoffshorewind.com)

## COMMUNITY OFFSHORE WIND FISHERIES NOTICE 2023-01

The lease area is located 32 nautical miles east of Barnegat Inlet, NJ and 56 nautical miles south of Long Beach, NY. Offshore, it is positioned east of the Star Slough and just south of the CORVALLIS wreck. Mariners transiting and operating offshore are encouraged to note survey locations and timing. Fishermen fishing mobile gear or deploying tended, fixed fishing gear in survey areas when survey vessels are present are requested to coordinate operations through direct bridge-to-bridge communications with survey vessels. Fishermen planning to fish fixed gear in survey areas, particularly within potential export cable routes, are encouraged to contact Fisheries Liaisons Deirdre Boelke or Michelle Duval to coordinate activities in advance. Latitude and longitude coordinates of survey routes can be provided upon request. A local commercial fishing vessel will also scout the area for fishing gear in advance of survey operations.

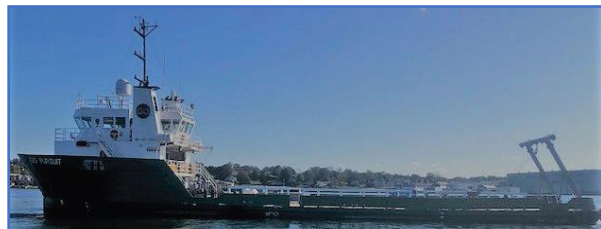
- Two 170-foot vessels, the GO PURSUIT and GO DISCOVERY, are surveying the lease area and will also survey the export cable routes under consideration. The vessels will be towing survey equipment astern and request a 0.5 nautical mile closest point of approach.
- Survey vessels will monitor VHF channel 16 and will have an Onboard Fisheries Liaison to communicate and coordinate with the fishing fleet.
- Both survey vessels have Protected Species Observers (PSOs) onboard who monitor for the presence of protected species during all vessel activities and transits, day and night. PSOs ensure that any required protective measures and avoidance maneuvers are implemented if protected species are observed.
- During periods of inclement weather, vessels may transit to the Sandy Hook, NJ anchorage area to shelter until conditions improve and survey activities can be safely resumed. Vessels are not towing survey equipment when running weather patterns outside of the lease area or potential export cable corridors.

Please contact the Project's Fisheries Liaisons with any fisheries-related questions, concerns, or suggestions regarding future survey communications.



### ***M/V GO DISCOVERY***

Vessel Flag: USA  
Call sign: WDK4727  
MMSI: 368058130  
Bridge phone: (+1) 337-706-5602  
Email: [godiscovery@guiceoffshore.com](mailto:godiscovery@guiceoffshore.com)  
VHF: Channel 16



### ***M/V GO PURSUIT***

Vessel Flag: USA  
Call sign: WDH6498  
MMSI: 367191410  
Bridge phone: (+1) 337-205-7400  
Email: [gopursuit@guiceoffshore.com](mailto:gopursuit@guiceoffshore.com)  
VHF: Channel 16

**For additional information and to sign up for updates, please visit**  
[communityoffshorewind.com/fisheries.](https://communityoffshorewind.com/fisheries)