

## GEOPHYSICAL AND GEOTECHNICAL SURVEY ACTIVITIES

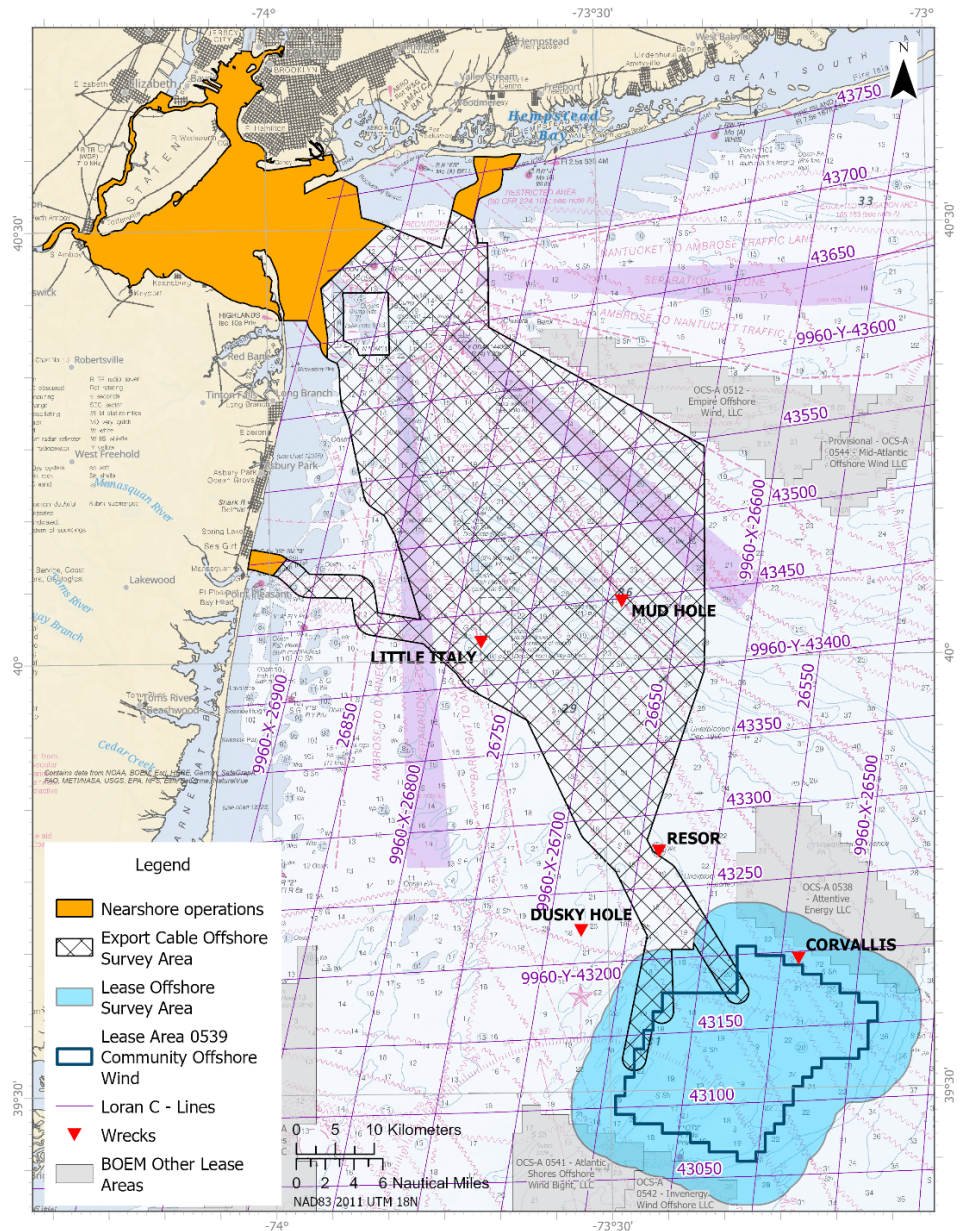
Community Offshore Wind is updating and amending [Fisheries Notice 2024-03](#) to advise fishermen and other interested parties of adjusted geographic scope and timeframes for survey activities as described below.

The R/V WESTERLY is continuing high resolution geophysical survey activities within nearshore (<20 meters water depth) portions of potential export cable corridors through June 2024. The M/V SANCO SWIFT continues collection of bathymetric and ultra-high resolution geophysical data within the lease area using a towed array of acoustic sources and receivers. Data collection will be completed by mid-June 2024.

The M/V HOS BROWNING and M/V FUGRO EXPLORER will commence geotechnical sampling and in-situ testing of the seabed within the lease area on or after June 1, 2024. Completion is expected by January 31, 2025. The M/V FUGRO EXPLORER will also sample at select locations along potential export cable routes. No towed gear will be used during these survey operations. Vessels will be stationary up to approximately 48 hours.

Information from survey activities will be used to characterize the seabed, refine knowledge of bottom features or obstructions, and inform lease area and export cable route development. The lease area is located 32 nautical miles east of Barnegat Inlet, NJ and 56 nautical miles south of Long Beach, NY.

Fishermen planning to fish fixed gear in survey areas are encouraged to contact Fisheries Liaisons [Sean Lucey](#) or [Michelle Duval](#) to coordinate activities in advance. A local commercial fishing vessel, F/V ANNICE MARIE, will scout for fishing gear in advance of survey operations as needed, and will monitor VHF 16 during scouting operations.



### CONTACTS

Sean Lucey, Fisheries Liaison  
Cell: 508.524.9444





[SeanL@communityoffshorewind.com](mailto:SeanL@communityoffshorewind.com)

Michelle Duval, Fisheries Liaison  
Cell: 919.601.3798

[MichelleD@communityoffshorewind.com](mailto:MichelleD@communityoffshorewind.com)

## COMMUNITY OFFSHORE WIND FISHERIES NOTICE 2024-04

- Survey vessels will be limited in their maneuverability when conducting operations. A 1.0 nautical mile closest point of approach (CPA) is requested for offshore vessels and a 0.5 nautical mile CPA for nearshore vessels.
- Survey vessels will monitor VHF channel 16 and offshore survey vessels will have Onboard Fisheries Liaisons to communicate and coordinate with the fishing fleet.
- Survey vessels have Protected Species Observers (PSOs) or crew observers onboard to monitor for protected species during all vessel activities and transits, and ensure required protective measures and avoidance maneuvers are implemented if protected species are observed.
- Vessels may transit to the Sandy Hook, NJ anchorage area to shelter during inclement weather and do not tow survey equipment when running weather patterns outside of the survey areas.

	<p><b><i>R/V WESTERLY</i></b>            Vessel Flag: USA            MMSI: 368255040            VHF: Channel 16            Bridge phone: N/A            Email: N/A</p> <p style="text-align: right;">Call sign: WDM9690            LOA: 50 ft</p>
	<p><b><i>M/V SANCO SWIFT</i></b>            Vessel Flag: Gibraltar            MMSI: 236111851            VHF: Channel 16            Bridge phone: +47 23 67 85 04/03            Email: <a href="mailto:bridge.swift@sanco.no">bridge.swift@sanco.no</a></p> <p style="text-align: right;">Call sign: ZDKY8            LOA: 315 ft</p>
	<p><b><i>M/V HOS BROWNING</i></b>            Vessel Flag: Mexico            MMSI: 345090011            VHF: Channel 16            Bridge phone: +1 985 773 9932            Email: <a href="mailto:browningcapt@hornbeckoffshore.com">browningcapt@hornbeckoffshore.com</a></p> <p style="text-align: right;">Call sign: XCBK8            LOA: 292 ft</p>
	<p><b><i>M/V FUGRO EXPLORER</i></b>            Vessel Flag: Mexico            MMSI: 357456000            VHF: Channel 16            Bridge phone: +1 713 369 4472            Email: <a href="mailto:bridge@epr.fugro.com">bridge@epr.fugro.com</a></p> <p style="text-align: right;">Call sign: 3FEV9            LOA: 261 ft</p>

### SCOUT VESSEL

	<p><b><i>F/V ANNICE MARIE</i></b>            Vessel Flag: USA            Call sign: WDD5154            MMSI: 367154420            VHF: Channel 16</p>
---	---

For additional information and to sign up for updates, please visit [communityoffshorewind.com/fisheries](https://communityoffshorewind.com/fisheries).