



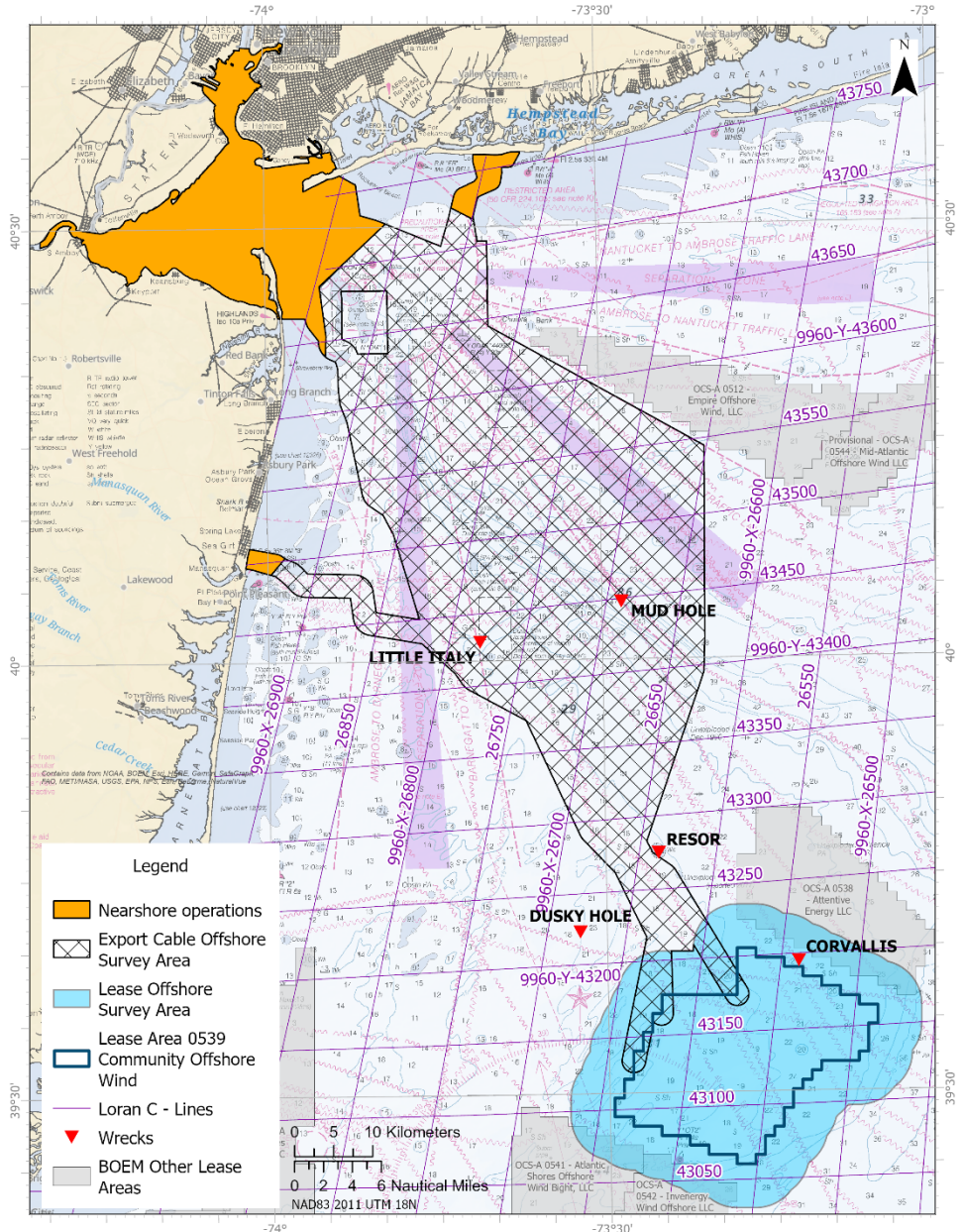
## BENTHIC, GEOPHYSICAL, AND GEOTECHNICAL SURVEY ACTIVITIES

Community Offshore Wind is updating and amending [Fisheries Notice 2024-01](#) to advise fishermen and other interested parties of adjusted geographic scope and timeframes for survey activities as described below.

The R/V WESTERLY is continuing high resolution geophysical survey activities within nearshore (<20 meters water depth) and specific offshore portions of potential export cable corridors through April 2024. The M/V SANCO SWIFT continues to collect bathymetric and ultra-high resolution seismic data within the lease area using a towed array of acoustic sources and receivers. Data collection will occur through mid-June 2024. The R/V BELLA MARIE is conducting nearshore (<20 meters) benthic sampling which is expected to be complete by the end of March 2024. The R/V SHEARWATER will conduct shallow geotechnical sampling in nearshore waters of upper New York Harbor through March 2024.

Information from survey activities will be used to characterize the seabed, refine knowledge of bottom features or obstructions, and inform future lease area and export cable route development.

The lease area is located 32 nautical miles east of Barnegat Inlet, NJ and 56 nautical miles south of Long Beach, NY. Fishermen planning to fish fixed gear in survey areas are encouraged to contact Fisheries Liaisons Sean Lucey or Michelle Duval to coordinate activities in advance. A local commercial fishing vessel, F/V ANNICE MARIE, will scout for fishing gear in advance of survey operations and will monitor VHF 16 during scouting operations.



### CONTACTS

Sean Lucey, Fisheries Liaison  
Cell: 508.524.9444

[SeanL@communityoffshorewind.com](mailto:SeanL@communityoffshorewind.com)

Michelle Duval, Fisheries Liaison  
Cell: 919.601.3798

[MichelleD@communityoffshorewind.com](mailto:MichelleD@communityoffshorewind.com)

## COMMUNITY OFFSHORE WIND FISHERIES NOTICE 2024-02

- Survey vessels will be limited in their maneuverability when conducting operations. A 1.0 nautical mile closest point of approach (CPA) is requested for the M/V SANCO SWIFT and a 0.5 nautical mile CPA for other vessels.
- Survey vessels will monitor VHF channel 16 and offshore geophysical survey vessels will have Onboard Fisheries Liaisons to communicate and coordinate with the fishing fleet.
- Survey vessels have Protected Species Observers (PSOs) or crew observers onboard to monitor for protected species during all vessel activities and transits, and ensure required protective measures and avoidance maneuvers are implemented if protected species are observed.
- Vessels may transit to the Sandy Hook, NJ anchorage area to shelter during inclement weather and do not tow survey equipment when running weather patterns outside of the survey areas.

	<p><b>R/V WESTERLY</b></p> <p>Vessel Flag: USA MMSI: 368255040 VHF: Channel 16 Bridge phone: N/A Email: N/A</p> <p>Call sign: WDM9690 LOA: 50 ft</p>
	<p><b>M/V SANCO SWIFT</b></p> <p>Vessel Flag: Gibraltar MMSI: 236111851 VHF: Channel 16 Bridge phone: +47 23 67 85 04/03 Email: <a href="mailto:bridge.swift@sanco.no">bridge.swift@sanco.no</a></p> <p>Call sign: ZDKY8 LOA: 315 ft</p>
	<p><b>R/V BELLA MARIE</b></p> <p>Vessel Flag: USA MMSI: 338417507 VHF: Channel 16 Bridge phone: +1 609-204-1902 Email: N/A</p> <p>Call sign: NJ8433HP LOA: 40 ft</p>
	<p><b>R/V SHEARWATER</b></p> <p>Vessel Flag: USA MMSI: 368528000 VHF: Channel 16 Bridge phone: +1 850-621-6200 Email: <a href="mailto:shearwaterpartychief@alpineocean.com">shearwaterpartychief@alpineocean.com</a></p> <p>Call sign: WDF5838 LOA: 110 ft</p>

### SCOUT VESSEL

	<p><b>F/V ANNICE MARIE</b></p> <p>Vessel Flag: USA Call sign: WDD5154 MMSI: 367154420 VHF: Channel 16</p>
---	---

For additional information and to sign up for updates, please visit [communityoffshorewind.com/fisheries](https://communityoffshorewind.com/fisheries).