



FISHERIES NOTICE 2023-05

Issued July 31, 2023

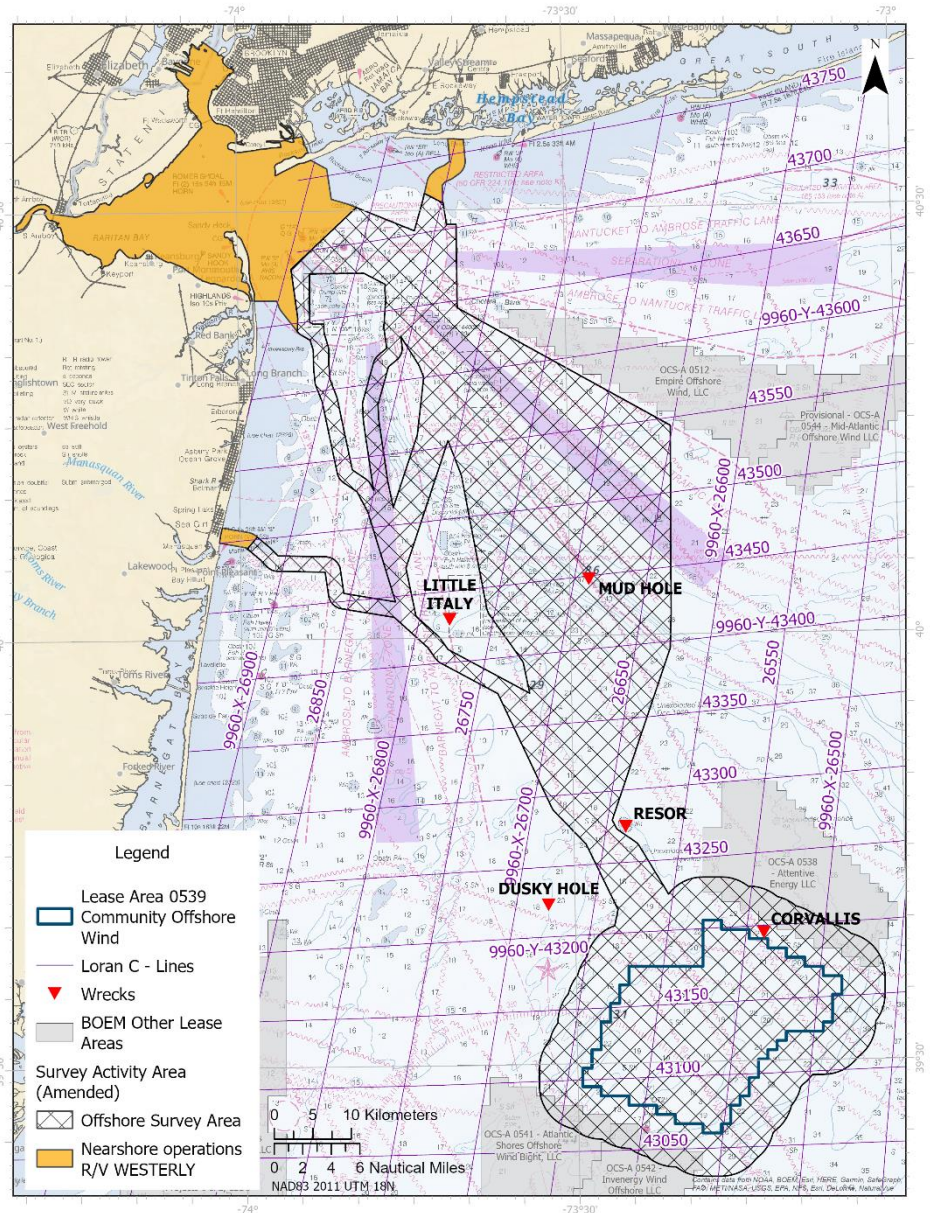


SCAN ME

BENTHIC, GEOPHYSICAL, AND GEOTECHNICAL SURVEY ACTIVITIES

Community Offshore Wind is informing fishermen and other interested parties that the ongoing high resolution geophysical [surveys](#) being conducted by the M/V GO PURSUIT and M/V GO DISCOVERY within the lease area and potential export cable corridors are expected to be complete by the end of August. Additional survey activities are expected to begin on or after August 14, 2023 as described below.

The M/V GO PURSUIT will commence benthic survey operations near the end of August through October 2023 using a camera array that will be lowered to the seafloor. Grab samples will be collected at select locations. The R/V WESTERLY will begin high resolution geophysical survey activities within the nearshore portions (<20m water depth) of potential export cable corridors continuing through December 2023. Survey gear will include multi-beam echosounder, sidescan sonar, magnetometer, shallow sub-bottom profiler, and multi-channel seismic. The M/V SEA GULL will conduct geotechnical surveys within the lease area and offshore portions of potential export cable corridors through October 2023. Geotechnical drilling and shallow geotechnical sampling will be conducted from a seabed frame lowered from the vessel. The M/V SANCO SWIFT will collect bathymetric and 3D ultra-high resolution seismic data within the lease area and along centerlines of potential export cable corridors through February 2024 using a towed array of acoustic sources and receivers. Information from survey activities will be used to characterize the seabed, refine knowledge of bottom features or obstructions, and inform future lease area and export cable route development.



CONTACTS

Deirdre Boelke, Fisheries Liaison
Cell: 978.518.0638

DeirdreB@communityoffshorewind.com

Michelle Duval, Fisheries Liaison
Cell: 919.601.3798

MichelleD@communityoffshorewind.com

COMMUNITY OFFSHORE WIND FISHERIES NOTICE 2023-05

The lease area is located 32 nautical miles east of Barnegat Inlet, NJ and 56 nautical miles south of Long Beach, NY. Offshore, it is positioned east of the Star Slough and just south of the CORVALLIS wreck. Fishermen planning to fish fixed gear in survey areas are encouraged to contact Fisheries Liaisons Deirdre Boelke or Michelle Duval to coordinate activities in advance. A local commercial fishing vessel, F/V ANNICE MARIE, will scout the area for fishing gear in advance of survey operations and will monitor VHF 16 during scouting operations.

- **Survey vessels will be limited in their maneuverability when conducting operations, and request a 0.5 nautical mile closest point of approach.**
- **Survey vessels will monitor VHF channel 16 and offshore geophysical survey vessels will have Onboard Fisheries Liaisons to communicate and coordinate with the fishing fleet.**
- Survey vessels have Protected Species Observers (PSOs) or crew observers onboard who monitor for the presence of protected species during all vessel activities and transits, and ensure required protective measures and avoidance maneuvers are implemented if protected species are observed.
- Vessels may transit to the Sandy Hook, NJ anchorage area to shelter during inclement weather. Vessels do not tow survey equipment when running weather patterns outside of the survey areas.



M/V GO PURSUIT

Vessel Flag: USA
MMSI: 367191410
VHF: Channel 16
Bridge phone: (+1) 337-205-7400
Email: gopursuit@guiceoffshore.com
Call sign: WDH6498
LOA: 170 ft



R/V WESTERLY

Vessel Flag: USA
MMSI: 368255040
VHF: Channel 16
Bridge phone: N/A
Email: N/A
Call sign: WDM9690
LOA: 50 ft



M/V SANCO SWIFT

Vessel Flag: Gibraltar
MMSI: 236111851
VHF: Channel 16
Bridge phone: +47 23 67 85 04/03
Email: bridge.swift@sanco.no
Call sign: ZDKY8
LOA: 315 ft



M/V SEA GULL

Vessel Flag: Marshall Islands
MMSI: 538010424
VHF: Channel 16
Bridge phone: +1(281) 928-0903
Email: gull.captain@remoyship.no
Call sign: LAGK8
LOA: 292 ft



F/V ANNICE MARIE

Vessel Flag: USA
Call sign: WDD5154
MMSI: 367154420
VHF: Channel 16

For additional information and to sign up for updates, please visit communityoffshorewind.com/fisheries.